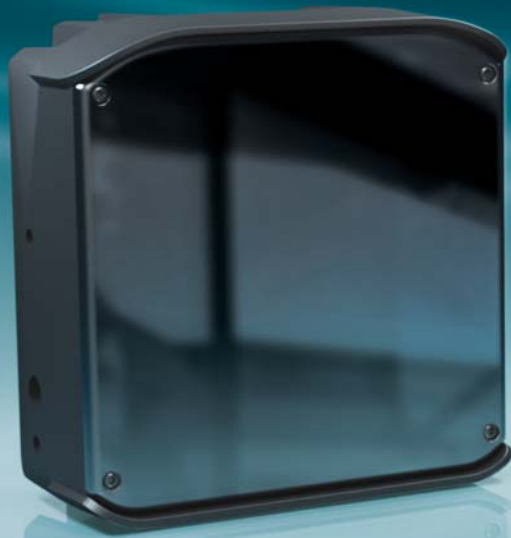


# Varifocal Illumination System

VIS-1080 Infrared Series, Patent Pending



## Key Features

- Continuous coverage varying from 9° to 95°
- Motorized adjustable beam angle and light control means 1 model replaces multiple competitive models, reducing inventory and optimizing performance
- No site survey required because one VIS unit can be adjusted for almost any field of view
- Fully controllable via RS232, RS485, and Pelco D Protocol
- Advanced Heat Management for long LED life and maximum performance
- Designed for uniform illumination for optimum camera performance

## Description

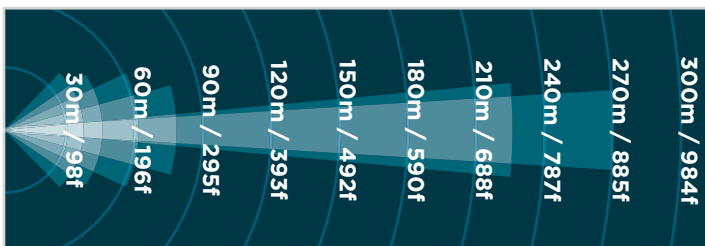
The VIS illuminator by NuOptic creates a new level of performance and flexibility previously not available in illumination technology. Available in 850nm and 940nm, the VIS illuminator uses sophisticated precision optics to create a truly varifocal illuminator whose field of illumination can be set to any value between 9° and 95° - all without changing a single part.

Installation is made easy via control knobs located inside the unit's environmental cover or by using the RS232/RS485/Pelco D interfaces.

Designed to save cost, minimize inventory, reduce installation time, and maximize image quality, the VIS illuminator was designed with the installer in mind. Because of its varifocal nature, and full adjustability, the VIS illuminator is the perfect companion for both analog and IP Day/Night video security cameras. The varifocal illuminator's field of illumination can be set to best match the setting of the camera lens.

Supporting up to 64 presets for integration with PTZ applications, the VIS illuminator can store illumination and brightness levels that best match the camera's field of view. No longer are two illuminators needed, one with wide setting and one with narrow setting - VIS illumination technology enables one illuminator to do both, saving cost and dramatically improving performance.

Approximate coverage from a single unit.  
Illustration shows the unit at 95°, 70°, 50°, 30°, 10°, and 9°.



## Technical Specifications

- Continuously variable angle: 9° to 95°
- Max distance up to 270m (885ft)
- Pelco D via RS485/RS232
- Adjustable Power: 0 to 80 Watts
- 24V AC  $\pm$  10%, 2.5 A or 24V-36V DC, 3.3-2.3 A
- 64 presets for integration with PTZ
- 5 year warranty\*
- Adjustable photocell for automatic on/off
- 850nm (semi-covert) or 940nm (fully covert)
- Environmental:
  - IP66 water and dust protection
  - 40 to +50 °C operating temperature
- Installation kit included:
  - Adjustable wall mount & anchor bolts
  - Power cable
  - Interface and power connectors
- Motorized varifocal optics allow the illumination angle to be configured at the same time as the camera and lens - at the installation site.
- High light output and adjustable varifocal beam angle allow for the optimum setup
- Multi-unit configurations increase power for greater coverage and significantly longer distances.

\*excludes drive train in continuous motion applications



## VIS 1080 Series - IR Illuminators

VIS-1080-S850 80 Watt, Standard Comm Interface, 850 nm  
 VIS-1080-S940 80 Watt, Standard Comm Interface, 940 nm

### Illuminator Kits

VIS-1080-S850-1 80 Watt, Standard Comm Interface, 850 nm  
 VIS-1080-S940-1 80 Watt, Standard Comm Interface, 940 nm  
 VIS-1080-S850-2 160 Watt, Standard Comm Interface, 850 nm  
 VIS-1080-S940-2 160 Watt, Standard Comm Interface, 940 nm  
 VIS-1080-S850-3 240 Watt, Standard Comm Interface, 850 nm  
 VIS-1080-S940-3 240 Watt, Standard Comm Interface, 940 nm

\* Kits include illuminators, proper power supply, Premium Wall Mount, Junction Box (for dual and triple kits), and gang mount(s) (one gang mount for dual kits and two gang mounts for triple kits)

### Accessories & Power Supplies

VIS-1000-PWM Premium Wall Mount, Pan and Tilt  
 VIS-1000-CM Corner Mount  
 VIS-1000-PM Pole Mount  
 VIS-1000-GM Gang Mount  
 VIS-1000-HM Horizontal Surface Mount  
 VIS-100-PWR 100 Watt, for use with single unit, 5 Yr. Warranty  
 VIS-185-PWR 185 Watt, for use with dual units, 5 Yr. Warranty  
 VIS-240-PWR 240 Watt, for use with triple units, 5 Yr. Warranty  
 VIS-JB-1 Junction Box for multiple units

### Other Technical Product Specifications

Housing Single body high-durability aluminum  
 Weight 2.0 kg (4.4 lb.)  
 Dimensions 170mm x 170mm x 87mm (6.7" x 6.7" x 3.4") [HxWxD]  
 Color Black powder coat finish with polycarbonate front window



**IP66**

Single unit (top view)



Add another illuminator for a dual unit configuration (top view)

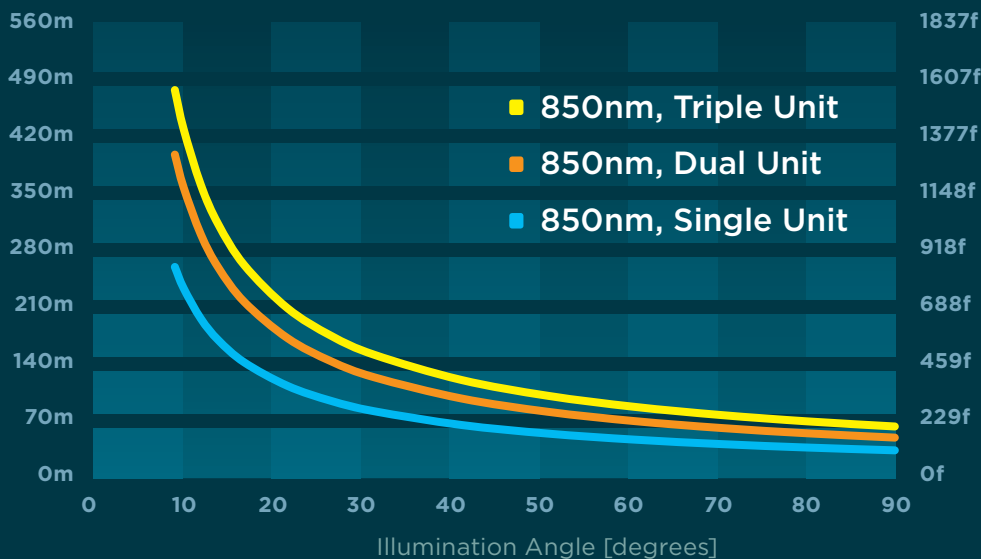


Combine three illuminators for a triple unit configuration (top view)



## Distance Performance

VIS 80W Illumination Distance, 850nm

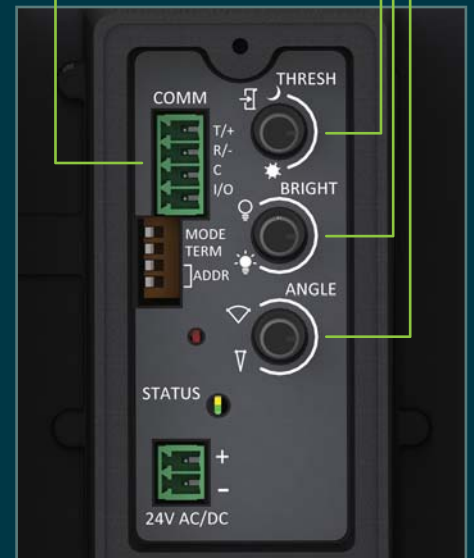


RS485/RS232 communications  
 Digital input/output interfaces

Continuously variable angle

Adjustable power range

Photocell level adjust



All data, including distances and product specifications, are subject to change without notice. Datasheet: 02/27/2013